



Sales Information Pack

www.woodacrehomes.co.uk





Woodacre Apartments Specifications

All properties at Woodacre Apartments enjoy a host of fixtures, fittings and amenities of the highest quality, tailored for your comfort and convenience:

- A luxury fitted kitchen with oven, hob & extractor
- Stylish bathroom with shower & bath
- Heated towel rail to bathroom
- Gas & electric
- Recessed spot lighting to some rooms
- Paneled doors throughout
- A balcony or terrace in most apartments
- Virgin phone sockets with USB ports ready for you to connect
- Virgin Superfast Broadband
- Neutral colours to walls & ceilings
- Under floor heating you can control from your smartphone, tablet or laptop
- On-site parking behind an electric gate
- Internal communal bicycle store
- Fully fenced landscaped gardens & managed woodland
- Communal recycling & general waste bins
- A management company responsible for the gardens, woodland and waste disposal services



Pricing Schedule

	Sqm	Style	Balcony/Terrace	Beds	Baths	Price
Apartment 1	65.86sqm	Ground Floor	Balcony	2	1	SOLD
Apartment 2	64.47sqm	Ground Floor	Balcony	2	1	SOLD
Apartment 3	64.01sqm	Ground Floor	Balcony	2	1	SOLD
Apartment 4	64.47sqm	First Floor	Roof Terrace	2	1	SOLD
Apartment 5	63.91sqm	First Floor	Balcony	2	1	SOLD
Apartment 6	65.86sqm	Lower Ground Floor	None	2	1	£110,000
Apartment 7	69.11sqm	Basement Duplex	Garden Terrace	2	2	£129,000
Apartment 8	57.97sqm	Basement Duplex	Garden Terrace	2	2	£120,000
Apartment 9	64.01sqm	Lower Ground Floor	None	2	1	£110,000

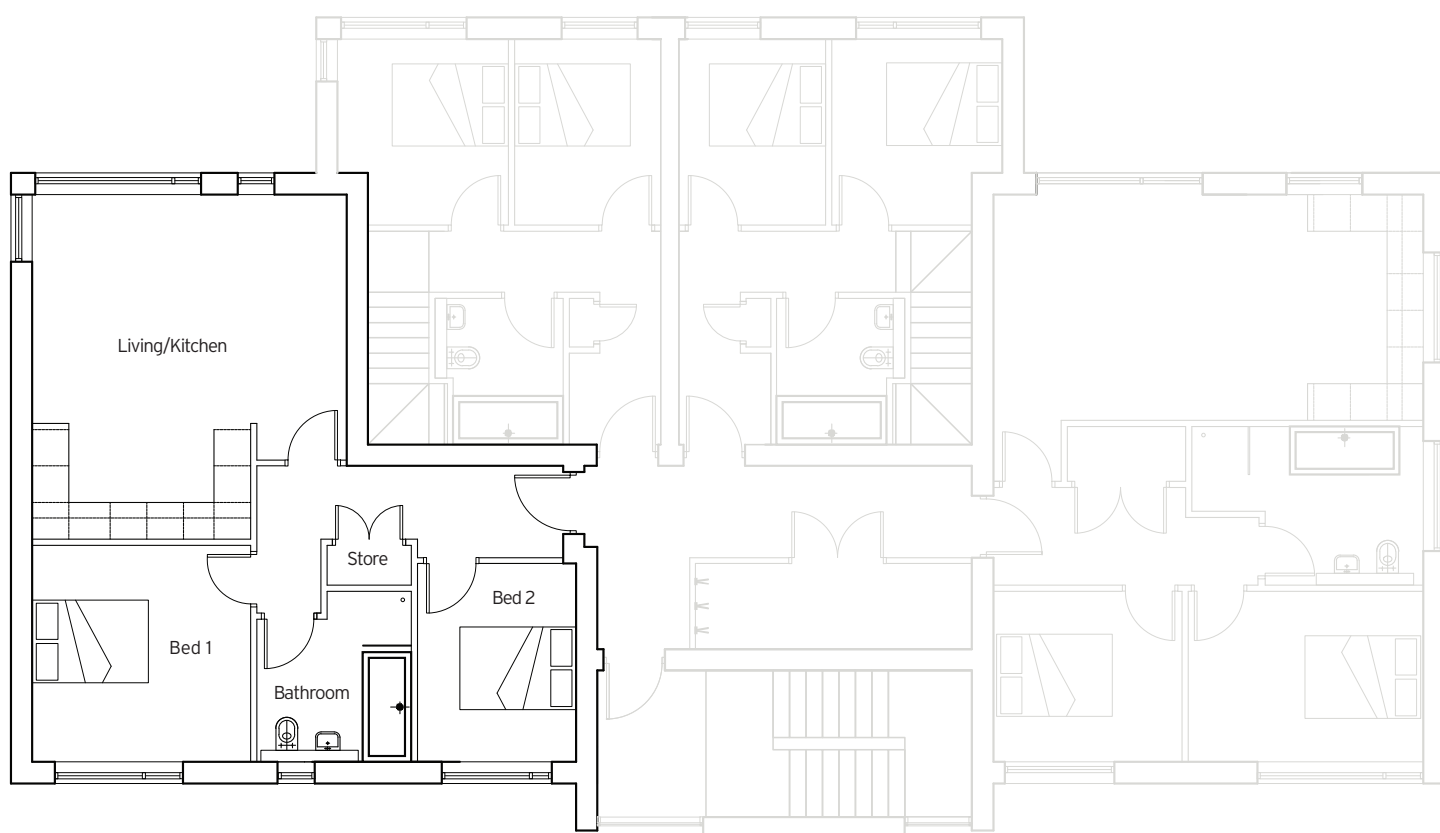
For more information call Urban Base on 0845 6431186

Prices are indicative and for guidance only. Prices correct at time of print November 2017
 All areas, measurements, layouts and distances are referred to as a guide only. Room dimensions shown have tolerances and should not be used to determine measurements for items of furniture or appliances.
 All dimensions are approximate as at February 2017.



Unit 6 Lower Ground Floor

2 Bedrooms



ROOM SIZES

Living/Kitchen	27.97 sqm
Store	1.0 sqm
Bed 1	13.24 sqm
Bed 2	9.01 sqm
Bathroom	6.81 sqm

All areas, measurements, layouts and distances are referred to as a guide only. Room dimensions shown have tolerances and should not be used to determine measurements for items of furniture or appliances.

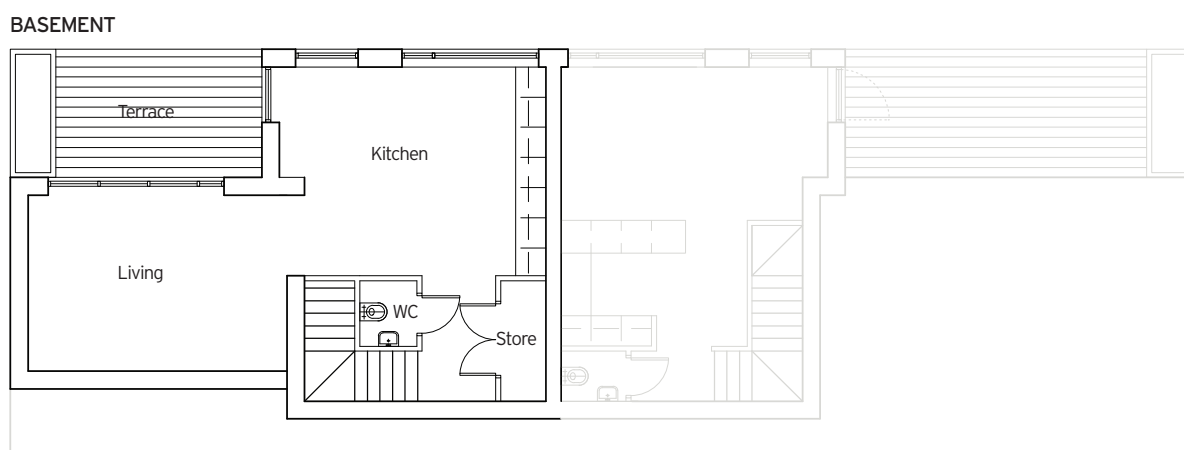
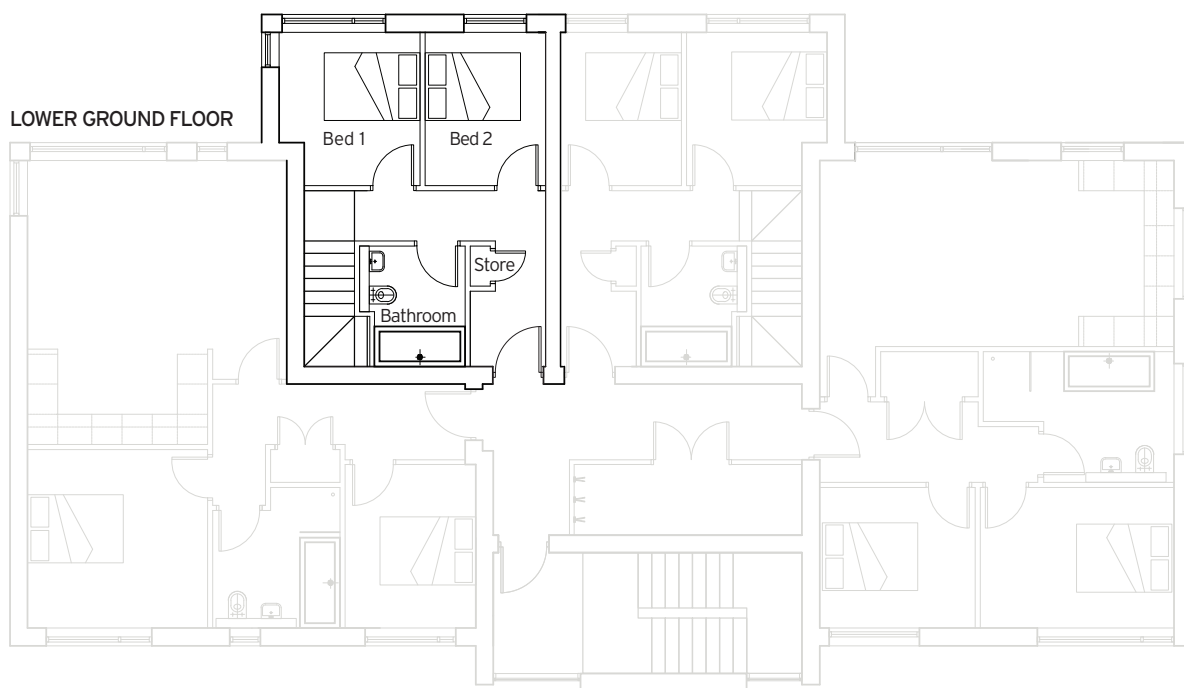
All dimensions are approximate as at February 2017.



For more details call **Urban Base** on 0845 643 1186

Unit 7 Basement Duplex

2 Bedrooms



ROOM SIZES

Kitchen	21.03 sqm
Living	18.14 sqm
Store	0.32 sqm
Store	2.05 sqm
Bed 1	7.37 sqm
Bed 2	8.47 sqm
Bathroom	4.71 sqm
WC	1.49 sqm

All areas, measurements, layouts and distances are referred to as a guide only. Room dimensions shown have tolerances and should not be used to determine measurements for items of furniture or appliances.

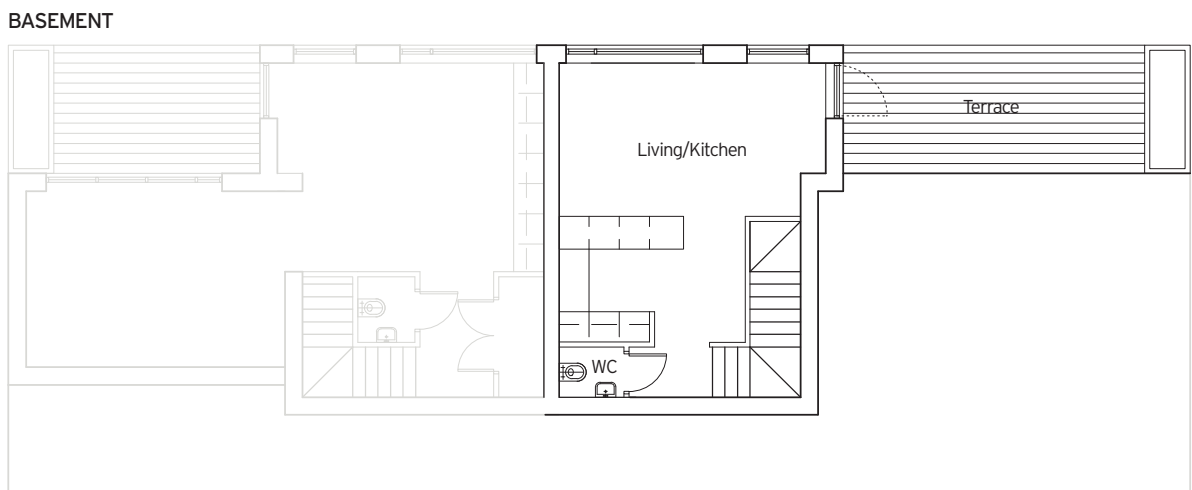
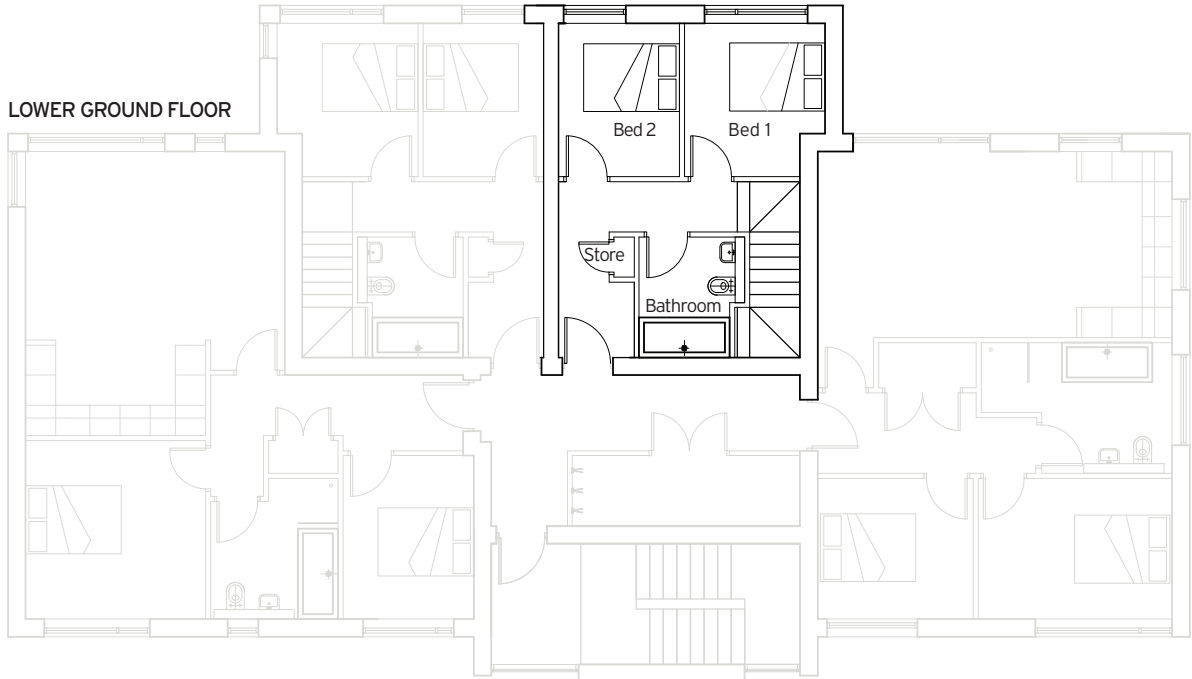
All dimensions are approximate as at February 2017.



For more details call **Urban Base** on **0845 643 1186**

Unit 8 Basement Duplex

2 Bedrooms



ROOM SIZES

Living/Kitchen	24.97 sqm
Store	0.32 sqm
Bed 1	7.37 sqm
Bed 2	8.47 sqm
Bathroom	4.71 sqm
WC	1.75 sqm

All areas, measurements, layouts and distances are referred to as a guide only. Room dimensions shown have tolerances and should not be used to determine measurements for items of furniture or appliances.

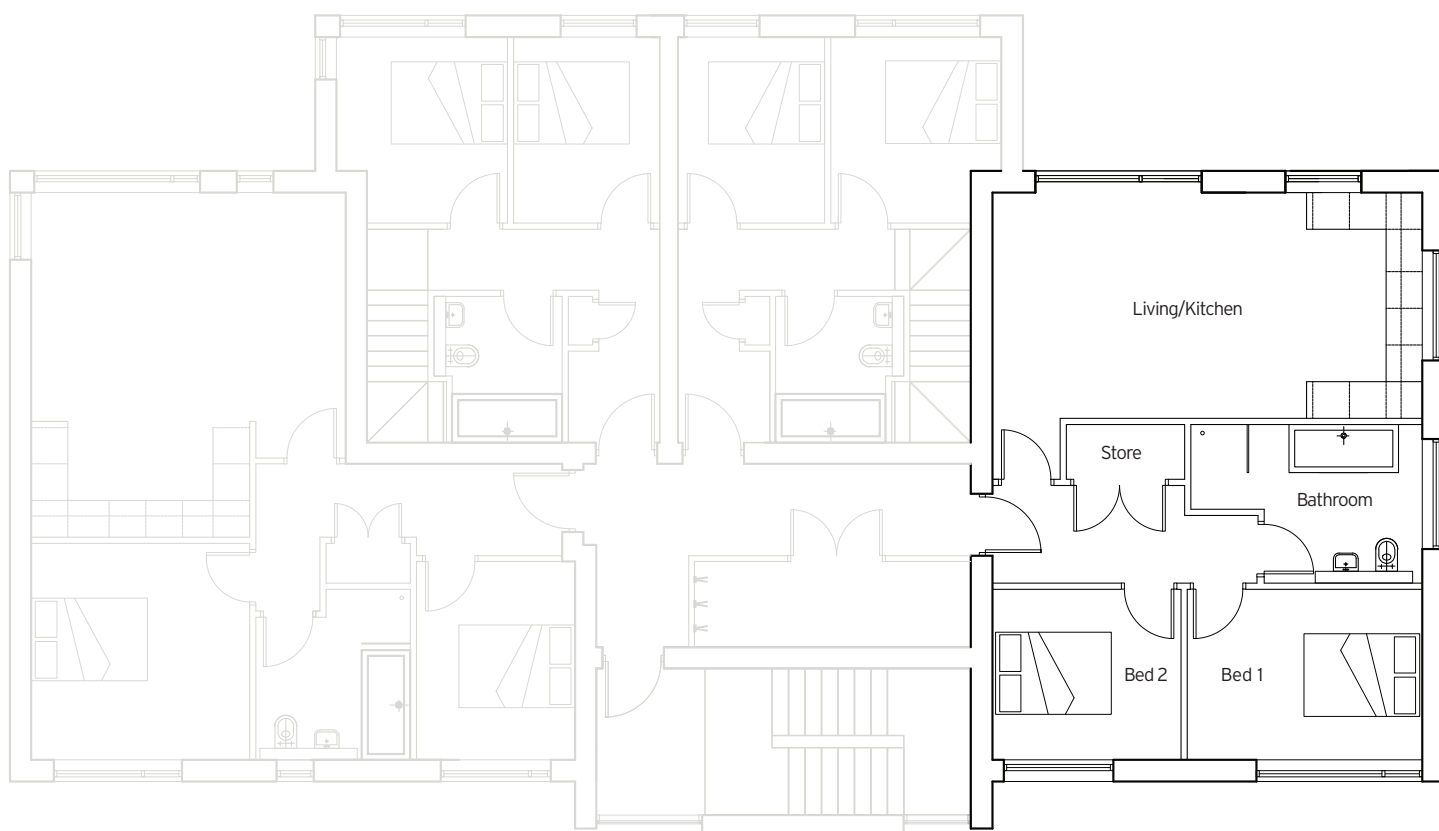
All dimensions are approximate as at February 2017.



For more details call **Urban Base** on **0845 643 1186**

Unit 9 Lower Ground Floor

2 Bedrooms



ROOM SIZES

Living/Kitchen	26.24 sqm
Store	1.75 sqm
Bed 1	9.99 sqm
Bed 2	9.08 sqm
Bathroom	7.35 sqm

All areas, measurements, layouts and distances are referred to as a guide only. Room dimensions shown have tolerances and should not be used to determine measurements for items of furniture or appliances.

All dimensions are approximate as at February 2017.



For more details call **Urban Base** on 0845 643 1186



**Woodacre Apartments, 442 Denton Road,
Newcastle upon Tyne NE15 7HD**

For more information call Urban Base on 0845 6431186

